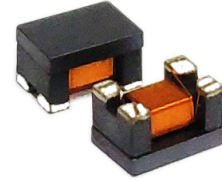


## Common Mode Filters

For automobile signal line



### FEATURE:

- Compatible with an operating temperature range of  $-40$  to  $+105^{\circ}\text{C}$ , so can be used for vehicle devices requiring compatibility with high temperatures.
- When mounting, the terminal and winding tape splicing part do not fuse.
- Which uses our unique technology, is a product that can achieve  $\text{DCR} < 2\Omega @ 125 \text{ deg. C}$  by reducing the DC resistance while maintaining a high L-value of  $100\mu\text{H}$ .

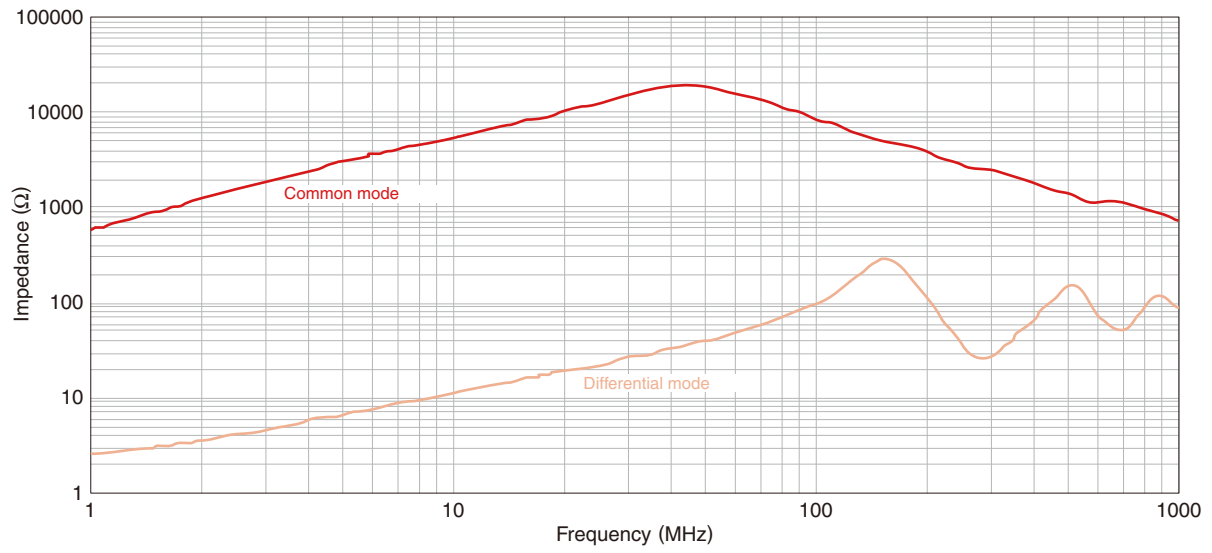
### APPLICATIONS

- FlexRay system.

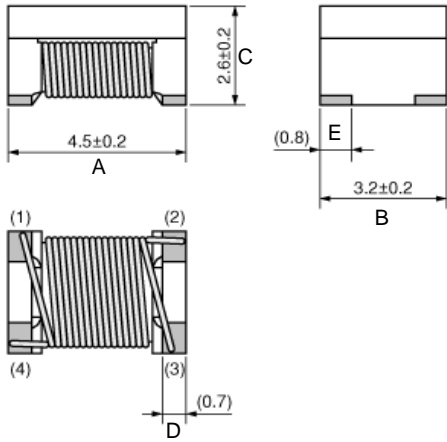
### STANDARD ELECTRICAL SPECIFICATIONS

PART NUMBER	Common mode inductance [1MHz] ( $\mu\text{H}$ )+50/-30%	Rated voltage (V)max.	Rated current (mA)max.	DC resistance ( $\Omega$ )max.	Insulation resistance (M $\Omega$ )min.
CMF2SMFWI101M	100	50	200	1.5	10

## PERFORMANCE GRAPHS: INDUCTANCE AND Q VS. FREQUENCY

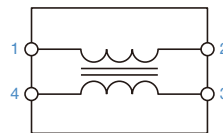
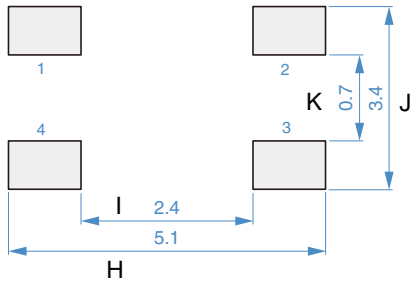


## DIMENSIONS in inches [millimeters]



(in mm)

PART NUMBER	A	B	C	D	E
CMF2SMFW1101M	0.177 ± 0.008 [4.5 ± 0.2]	0.126 ± 0.008 [3.2 ± 0.2]	0.110 ± 0.008 [2.8 ± 0.2]	0.028 [0.7]	0.031 [0.8]



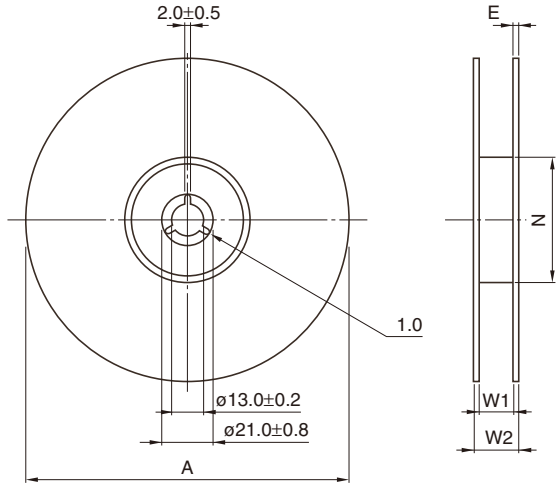
• No polarity

Dimensions in mm

PART NUMBER	H	I	J	K
CMF2SMFW1101M	5.1	2.4	3.4	0.7

## PACKAGING STYLE

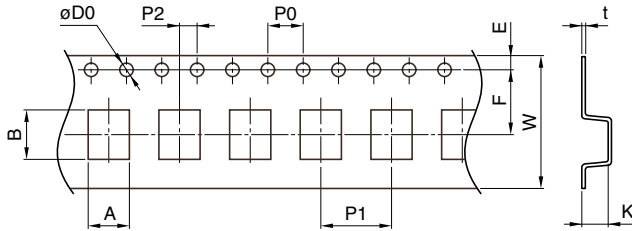
### REEL DIMENSIONS



A	W1	W2	N	E
ø330±2	13.5±0.5	17.5±1	100±1	2 typ.

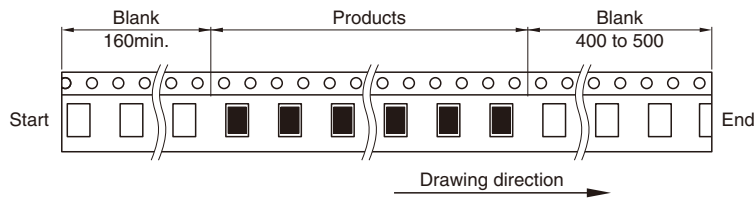
Dimensions in mm

### TAPE DIMENSIONS



Dimensions in mm

A	B	øD0	E	F	P0	P1	P2	W	K	t
3.6±0.1	4.9±0.1	1.55±0.05	1.75±0.1	5.5±0.05	4.0±0.1	8.0±0.1	2.0±0.05	12.0±0.2	3.05±0.1	0.3±0.05



Dimensions in mm

Quantity Per Reel : 500 pcs