

APPLICATIONS

- ▶ USB2.0,USB3.0,Ethernet
- ▶ HDMI2.0,Displayport 1.3,eSATA
- ▶ Unified Display Interface
- ▶ Digital Visual Interface
- ▶ High Speed Serial Interface

IECCOMPATIBILITY

- ▶ IEC61000-4-2 (ESD) ±20kV (air), ±15 kV (contact)
- ▶ IEC61000-4-4 (EFT) 40A (5/50ns)
- ▶ IEC61000-4-5 (Lightning) 3.5 A (8/20µs)

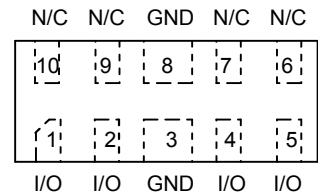
FEATURES

- ▶ 50.0 Watts Peak Pulse Power per Line (tp=8/20µs)
- ▶ Protects Four I/O lines
- ▶ Operating Voltage: 5.0V
- ▶ Ultra Low Capacitance: 0.5pF typical (I/O to GND)
- ▶ Weight: 8.0mg

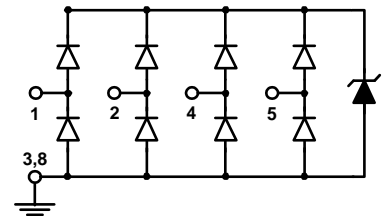
MECHANICALCHARACTERISTICS

- ▶ DFN2510P10 PACKAGE INFORMATION
- ▶ Quantity Per Reel : 3,000pcs
- ▶ Reel Size : 7 inch
- ▶ Lead Finish : Lead Free

DFN-2510



PIN CONFIGURATION

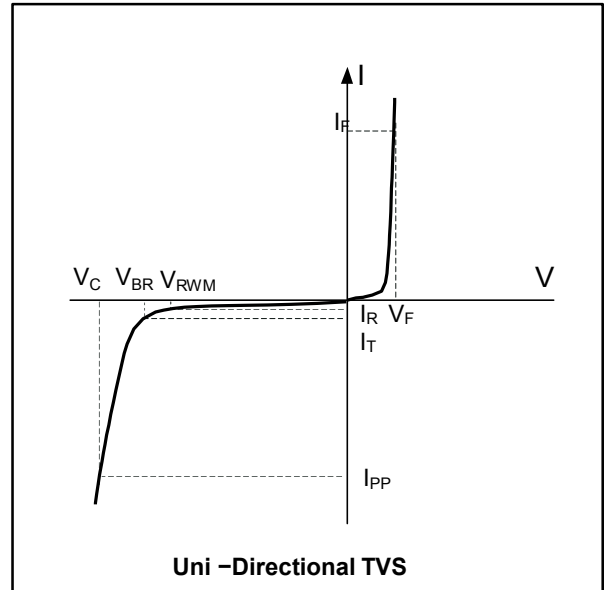


Absolute maximum rating@25°C

Rating	Symbol	Value	Unit
Peak Pulse Power (tP = 8/20µS)	Ppp	50	W
Lead Solder Temperature -Maximum (10 Seconds)	TL	260	°C
Operating Junction Temperature Range	TJ	-55 to +125	°C
Storage Temperature Range	Tstg	-55 to +150	°C

ELECTRICAL CHARACTERISTICS
($T_A = 25^\circ\text{C}$ unless otherwise noted)

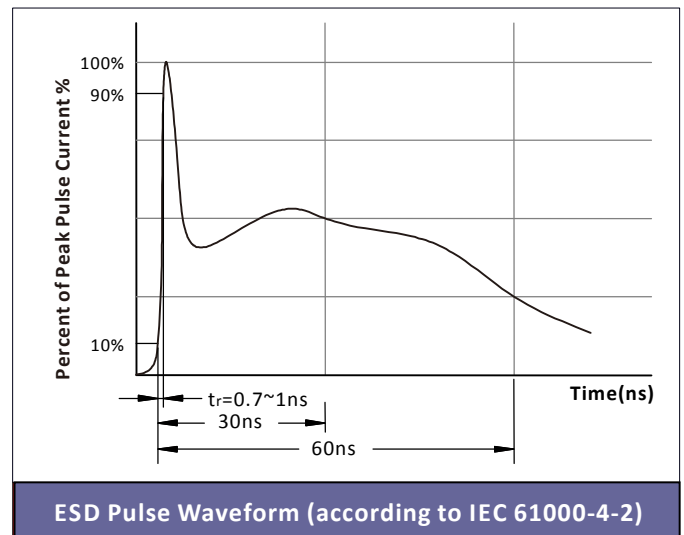
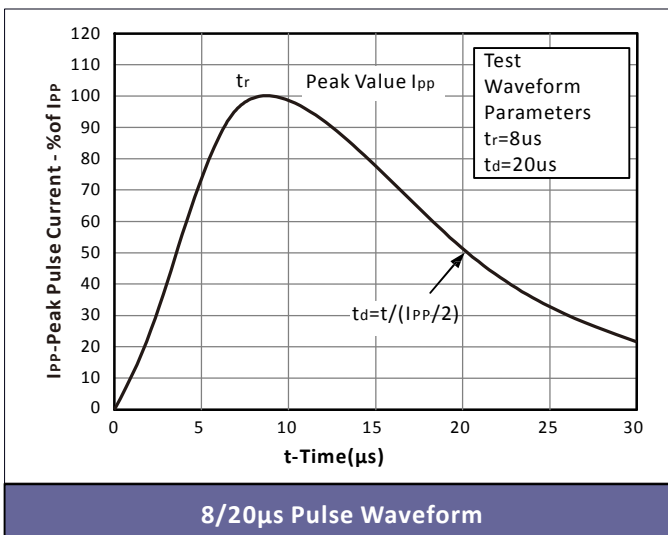
Symbol	Parameter
V_{RWM}	Peak Reverse Working Voltage
I_R	Reverse Leakage Current @ V_{RWM}
V_{BR}	Breakdown Voltage @ I_T
I_T	Test Current
I_{PP}	Maximum Reverse Peak Pulse Current
V_C	Clamping Voltage @ I_{PP}
P_{PP}	Peak Pulse Power
C_J	Junction Capacitance
I_F	Forward Current
V_F	Forward Voltage @ I_F



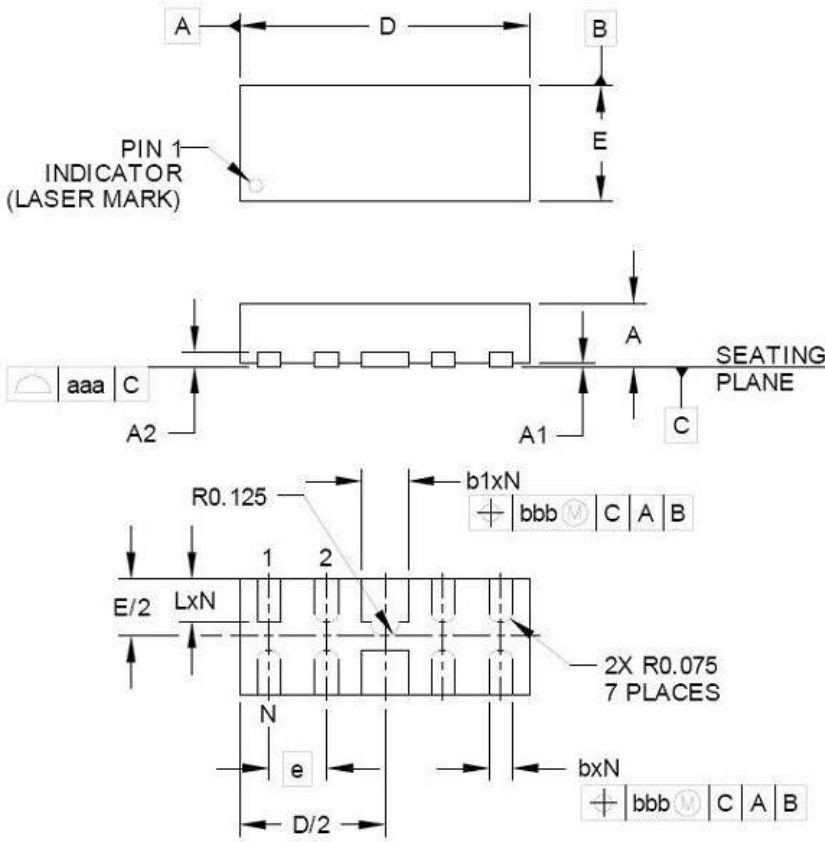
ELECTRICAL CHARACTERISTICS PER LINE (@ 25°C Unless Otherwise Specified)

PART NUMBER	DEVICE MARKING	V_{RWM}	V_B	I_T	V_C		I_R	C_j		C_j	
		(V) (max.)	(V) (min.)	(mA)	(8/20us) (max.)	@A	(μA) (max.)	I/O-I/O (pF) (Typical.)	(max.)	I/O-GND (pF) (Typical.)	(max.)
ESD0524UA	5R2P	5.0	6.0	1.0	14	3.5	0.5	0.2	0.3	0.5	0.55

CHARACTERISTIC CURVES

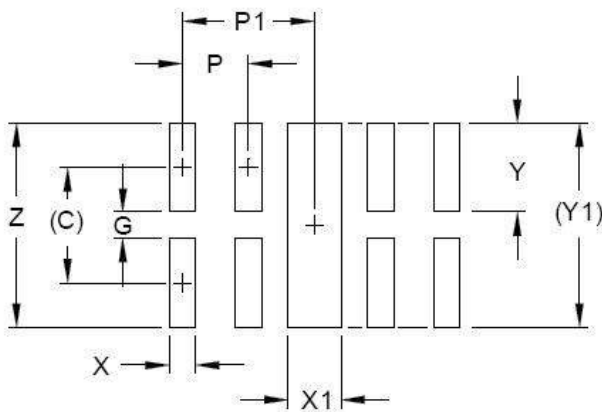


DFN2510PACKAGEOUTLINE&DIMENSIONS



DIM	INCHES			MILLIMETERS		
	MIN	NOM	MAX	MIN	NOM	MAX
A	.020	.023	.026	0.50	0.58	0.65
A1	0.00	.001	.002	0.00	0.03	0.05
A2		(.005)			(0.13)	
b	.006	.008	.010	0.15	0.20	0.25
b1	.014	.016	.018	0.35	0.40	0.45
D	.094	.098	.102	2.40	2.50	2.60
E	.035	.039	.043	0.90	1.00	1.10
e	.020 BSC			0.50 BSC		
L	.012	.015	.017	0.30	0.38	0.425
N	10			10		
aaa	.003			0.08		
bbb	.004			0.10		

*SOLDERINGFOOTPRINT



DIM	DIMENSIONS	
	INCHES	MILLIMETERS
C	(.034)	(0.875)
G	.008	0.20
P	.020	0.50
P1	.039	1.00
X	.008	0.20
X1	.016	0.40
Y	.027	0.675
Y1	(.061)	(1.55)
Z	.061	1.55